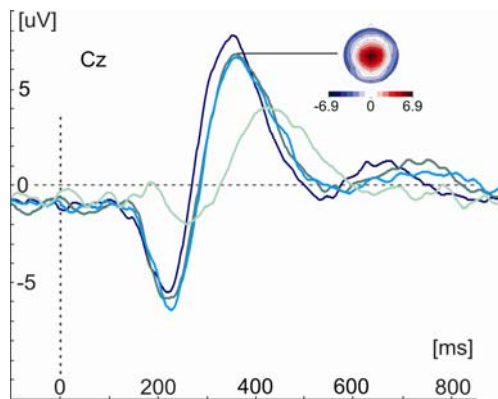




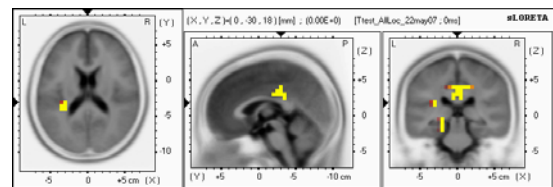
## Chronic neuropathic pain after spinal cord injury

Julia Blum, Sabina Hotz, Jenny Haefeli

Chronic neuropathic pain occurs often after spinal cord injury, is not treatable by conventional medication and massively reduces the quality of life of the patients. The underlying mechanisms that lead to the development of neuropathic pain are not yet understood. The workgroup aims at investigating the neurophysiological causes of this form of pain, thereby contributing to the development of new medical treatments and therapies. Further key aspects of activity are the development of objective diagnostic criteria for chronic neuropathic pain and the investigation of the relationship between chronic pain and depression.



Cortical evoked potentials elicited by painful stimulation at different body sites



Brain regions involved in processing of painful stimuli